



**SIGN COMPLIANCE**  
**SIGN PROJECTS**  
**SIGN MANAGEMENT**

**ANTI-SLIP**



**BLOMSMA**  
**SIGNS & SAFETY**



## Contribution to Safety

The risk of slips and falls can be reduced by implementing anti-slip measures

It is a fact: slips and falls account for 35% of all working days lost due to injuries. And what is more troubling is that accidental falls are the second commonest cause of death at the workplace. Along with painting and grinding solutions, anti-slip covers are a proven concept. They are designed with a long-lasting grit surface that provides a non-corrosive and impact resistant covering layer. They are field-proven in extremely wet, icy, oily, corrosive and dusty conditions and can be used in a wide range of industries, as well as in transportation, commercial and even residential applications.



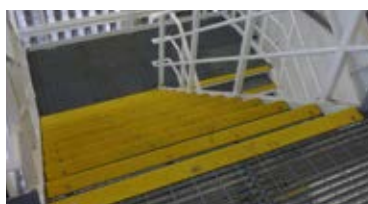
**MATERIALS & COLOURS**

**PAGE 4**



**STEP COVERS**

**PAGE 6**



**STAIR NOSES**

**PAGE 8**



**HAND ON RAILING**

**PAGE 10**



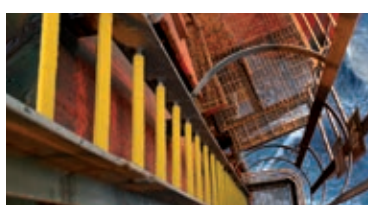
**STEP COVERS (SPECIALS)**

**PAGE 12**



**WALKWAY COVERS**

**PAGE 14**



**LADDER RUNG COVERS**

**PAGE 16**



**ANTI-SLIP TAPES AND FOILS**

**PAGE 18**



**ENGINEERING & INSTALLATION**

**PAGE 22**

# Materials and colours

Various materials and colours covering your needs

In wet, oily, dusty, or greasy environments, Blomsma Sings & Safety offers the right covers. Several grids are available and numerous choices of colours and a variety of materials and sizes. Regular cleaning will keep the covers free of debris and looking like new. Most household or industrial methods can be used. Detergents and mild degreasers work well. For stubborn deposits, use a brush with stiff bristles. High-pressure heated water (660 psi, as used in food processing plants) may be used in industrial environments. Snow and ice can be removed by a broom or a plastic shovel. Salt, calcium chloride or other melting agents can be used on compacted snow and ice.

# MATERIALS & COLOURS

## Grid Type

In addition to steel and pultruded FRP composite (fibreglass) covers, vinyl sheeting and roll material are available. Vinyl covers are adhesive materials that can be easily applied, which makes it ideal for use on curved tank roofs. Our grid selection for anti-slip covers and panels consists of:

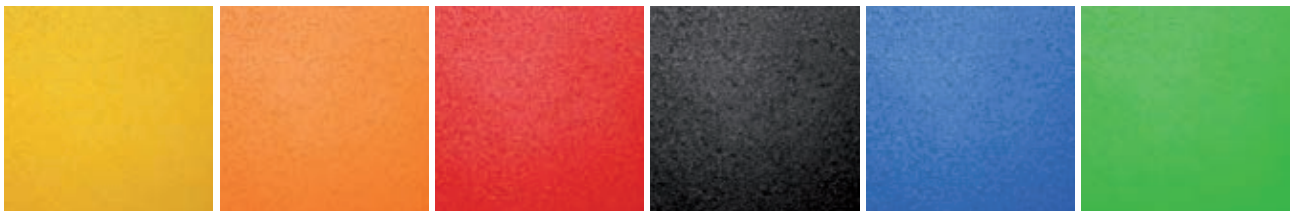
- extra coarse (offshore, maritime and industrial use)
- fine coarse (commercial and residential use)

## Phosphorescent works

When darkness falls, you can light the way to safety while simultaneously providing antislip protection underfoot for indoor and outdoor applications. Phosphorescent traction covers for steps, ladders and walkways have been demonstrated to remain visible for up to 20 hours in the dark after the light source is removed.

## Colour

When used appropriately, the use of the right colours can provide ever-present information and warnings of hazards which are essential to safety at work, and in some instances may be independent of language. Each with its own meaning and purpose, we can provide anti-slip materials in each of the colours below.



Safety yellow

Safety orange

Safety red

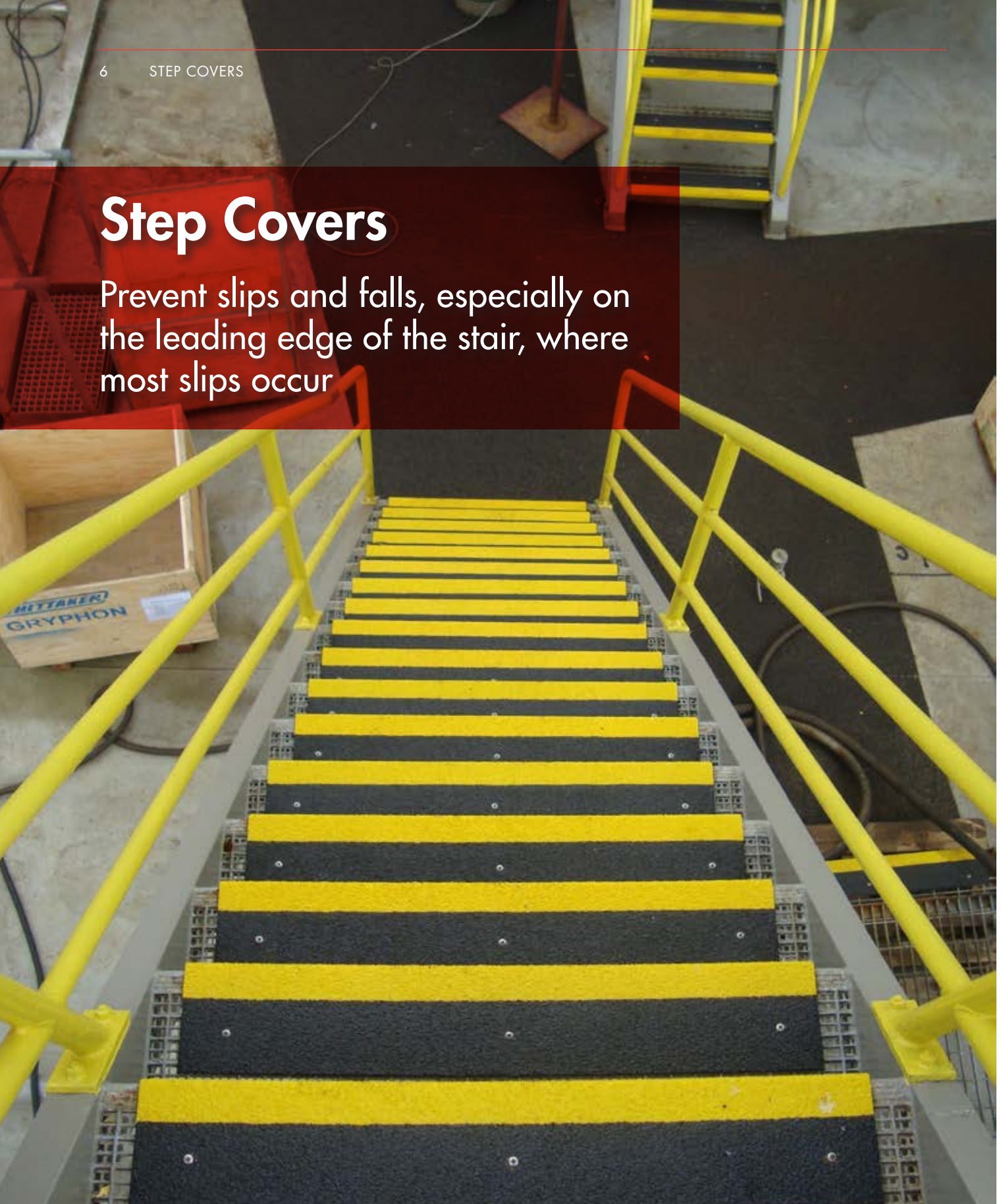
Black

Safety blue

Safety green

# Step Covers

Prevent slips and falls, especially on the leading edge of the stair, where most slips occur



There is a wide selection of basic materials for covering steps, depending on the requirements. These include stainless or galvanized steel or fibreglass (FRP) panels. These products are resistant to corrosion, UV and fire and they have a tough, gritty surface bonded onto the backing in a patented process. Step covers increase grip and visibility, thus minimizing the risk of incidents when using stairs. Additionally, step covers can be provided with text and symbols.

## STEP COVERS

Based on your requirements and our expertise, we combine the right base material, grit, size, and colours to cover your steps and stairs. With the right use of colour(s), the individual steps are marked, increasing safety when using the stairs. Blomsma offers a standard range of FRP panels\*:



### STEP COVER SAFETY YELLOW

	600mm	900mm	1200mm
150mm	1005.100001	1005.100002	1005.100003
225mm	1005.100004	1005.100005	1005.100006
300mm	1005.100007	1005.100008	1005.100009



### STEP COVER BLACK

	600mm	900mm	1200mm
150mm	1005.100010	1005.100011	1005.100012
225mm	1005.100013	1005.100014	1005.100015
300mm	1005.100016	1005.100017	1005.100018



### STEP COVER BLACK WITH YELLOW NOSE

	600mm	900mm	1200mm
150mm	1005.100019	1005.100020	1005.100021
225mm	1005.100022	1005.100023	1005.100024
300mm	1005.100025	1005.100026	1005.100027



### STEP COVER PHOSPHORESCENT

	600mm	900mm	1200mm
150mm	1005.100028	1005.100029	1005.100030
225mm	1005.100031	1005.100032	1005.100033
300mm	1005.100034	1005.100035	1005.100036



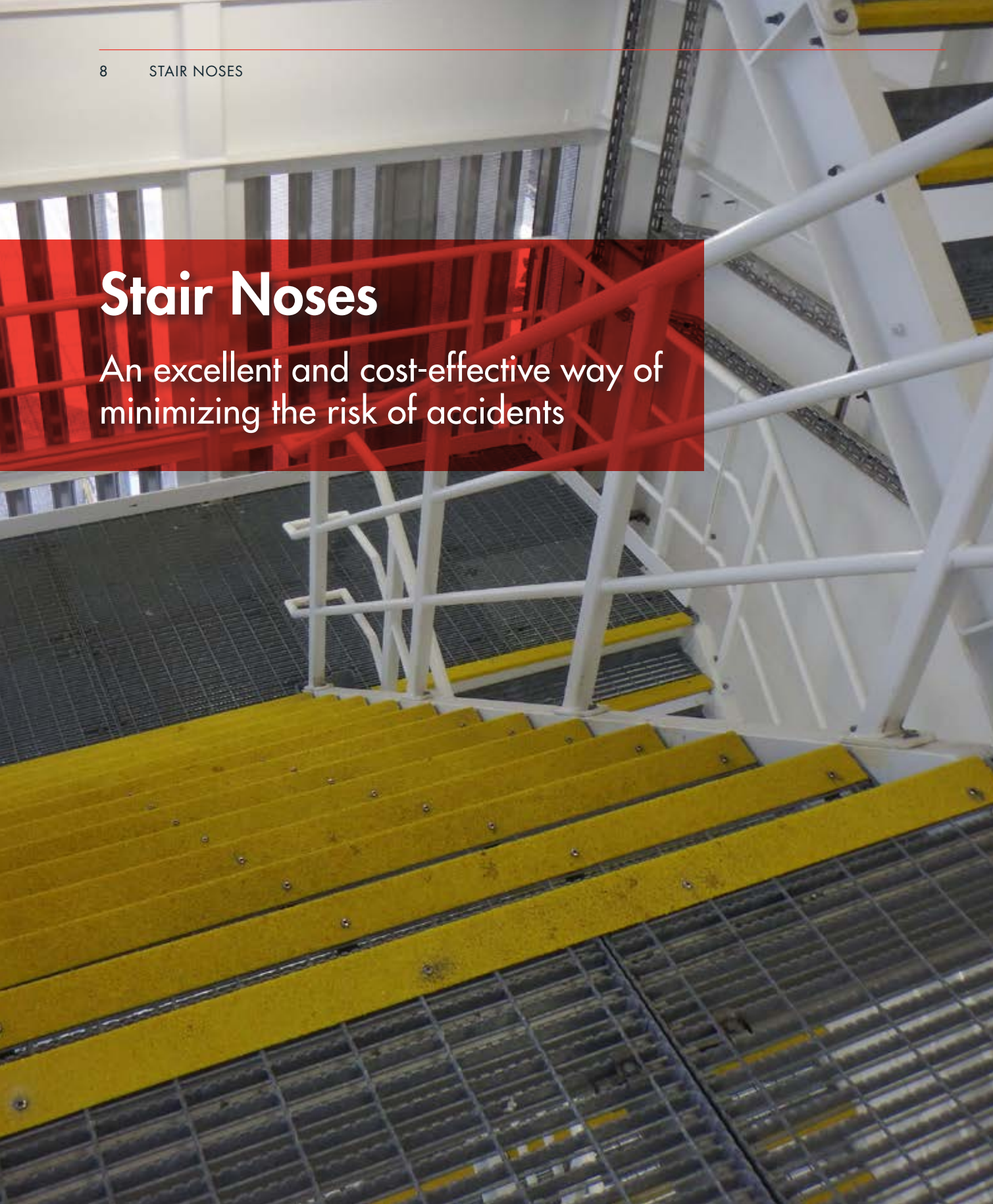
### INSTALLATION CLIPS FOR GRATED STEPS

Bolt 50mm	1201.101288
Bolt 60mm	1201.101289

\* Stainless steel or galvanized steel panels can be manufactured on demand.

# Stair Noses

An excellent and cost-effective way of minimizing the risk of accidents



Stair nosing is a panel that protrudes over the edge of the stair, and provides friction between the bottom of a foot and the top of the stair. This extra friction is designed to prevent slipping while using the stairs, and can be made from various materials. The main benefit of stair nosing is the cost effectiveness; stair noses are easy to install on existing stairs, eliminating lengthy renovations or the need for entirely new stairs. Beyond the standard grip material used in stair noses, high visibility options are also available. These make the edges of the stairs visible to those using them, and help buildings comply with various safety regulations.



## STAIR NOSES

We offer stair noses in a variety of materials and colours for industrial and safety applications. Colour and markings can be used to attract attention, designate caution, and communicate safety information. Blomsma offers a standard range of FRP stair noses\*:



### STAIR NOSE SAFETY YELLOW

	600mm	900mm	1200mm
75mm	1005.100037	1005.100038	1005.100039



### STAIR NOSE BLACK

	600mm	900mm	1200mm
75mm	1005.100040	1005.100041	1005.100042



### STAIR NOSE PHOSPHORESCENT

	600mm	900mm	1200mm
75mm	1005.100043	1005.100044	1005.100045

\* Stainless steel or galvanized steel noses can be manufactured on demand.

# Hand on Railing panels

High-Attention Step Covers with anti-slip protection



**Hand aan de leuning**  
**Use handrail**

Hand on railing panels are printed with an important safety message to instruct employees and visitors to use the handrail when using stairs. Placed on the top and bottom of the stairs, these covers also provide anti-slip protection. Ideal for industrial and commercial applications, each step cover is sub-surface printed with a non-slip protective coating applied for added durability to withstand heavy pedestrian foot traffic.

# HAND ON RAILING

Blomsma Sings & Safety offers a standard range of FRP hand on railing panels\*:



## HAND ON RAILING PANEL NL/UK

UP	600mm	900mm	1200mm
150mm	1005.100046	1005.100047	1005.100048
225mm	1005.100049	1005.100050	1005.100051
300mm	1005.100052	1005.100053	1005.100054

DOWN	600mm	900mm	1200mm
150mm	1005.100055	1005.100056	1005.100057
225mm	1005.100058	1005.100059	1005.100060
300mm	1005.100061	1005.100062	1005.100063



## HAND ON RAILING PANEL UK

UP	600mm	900mm	1200mm
150mm	1005.100064	1005.100065	1005.100066
225mm	1005.100067	1005.100068	1005.100069
300mm	1005.100070	1005.100071	1005.100072

DOWN	600mm	900mm	1200mm
150mm	1005.100073	1005.100074	1005.100075
225mm	1005.100076	1005.100077	1005.100078
300mm	1005.100079	1005.100080	1005.100081



## HAND ON RAILING PANEL GERMAN

UP	600mm	900mm	1200mm
150mm	1005.100082	1005.100083	1005.100084
225mm	1005.100085	1005.100086	1005.100087
300mm	1005.100088	1005.100089	1005.100090

DOWN	600mm	900mm	1200mm
150mm	1005.100091	1005.100092	1005.100093
225mm	1005.100094	1005.100095	1005.100096
300mm	1005.100097	1005.100098	1005.100099

\* Stainless steel or galvanized steel panels can be manufactured on demand.

# Highlight Covers

Highlight your tripping hazards



Whether you are looking to mark steps or level differences, our Highlight covers will make sure that they are marked for visible distinction. Whatever the situation, we can provide custom-made covers to meet your needs. Blomsma Signs & Safety has installed a variety of Highlight covers for its customers such as walkway covers including the customer's logo and colourscheme. That way, you can make sure you create a seamless brand experience, even when using anti-slip covers.

## HIGHLIGHT COVERS

Our Highlight covers can be provided in any colour or material, meeting your requirements. Listed below is our standard range of FRP covers\*. Other colours and materials can be supplied on demand.



### YELLOW-BLACK SLANTED

	600mm	900mm	1200mm
150mm	1005.100100	1005.100101	1005.100102
225mm	1005.100103	1005.100104	1005.100105
300mm	1005.100106	1005.100107	1005.100108



### RED-WHITE SLANTED

	600mm	900mm	1200mm
150mm	1005.100109	1005.100110	1005.100111
225mm	1005.100112	1005.100113	1005.100114
300mm	1005.100115	1005.100116	1005.100117



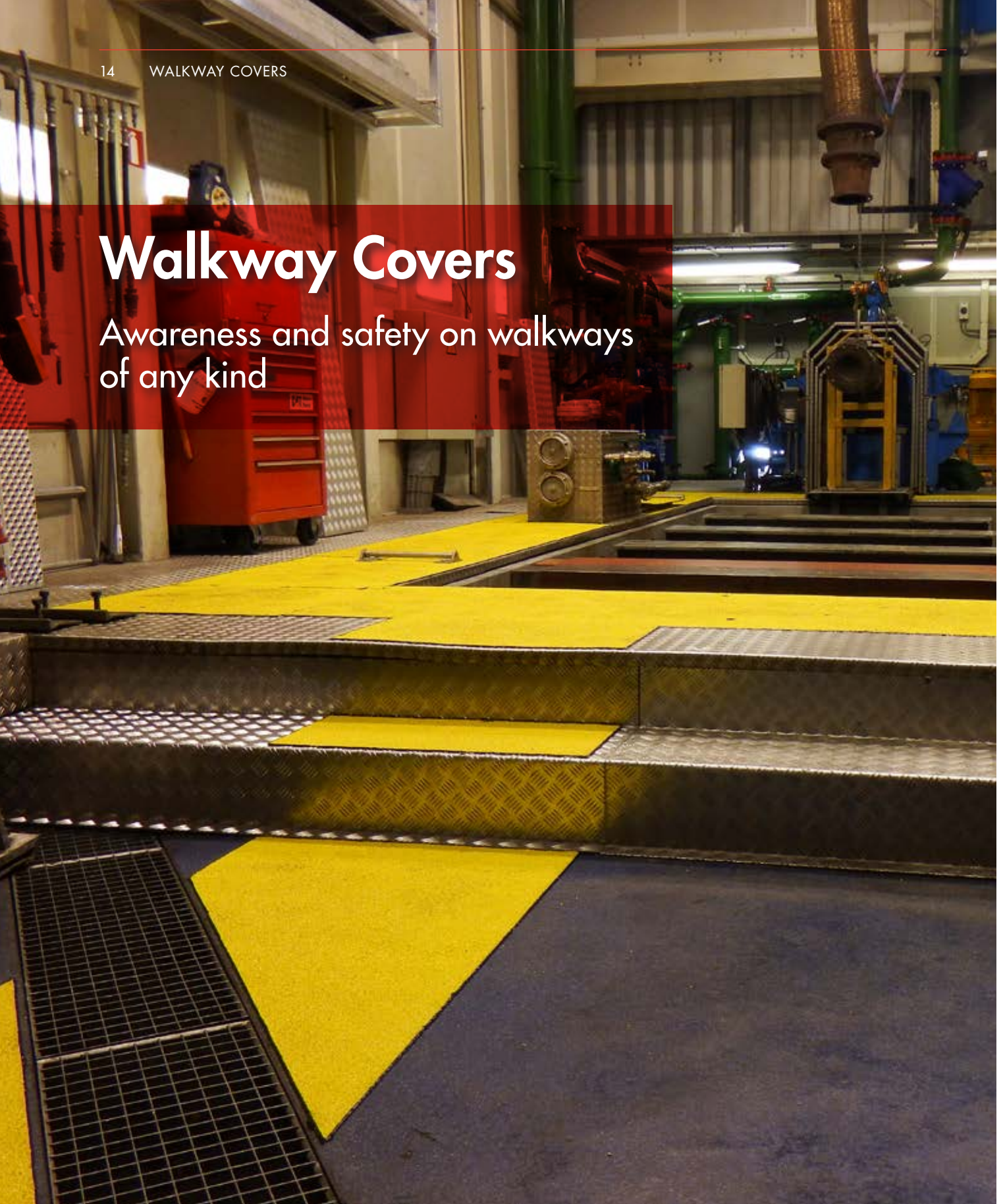
### GREEN-WHITE SLANTED

	600mm	900mm	1200mm
150mm	1005.100118	1005.100119	1005.100120
225mm	1005.100121	1005.100122	1005.100123
300mm	1005.100124	1005.100125	1005.100126

\* Stainless steel or galvanized steel covers can be manufactured on demand.

# Walkway Covers

Awareness and safety on walkways of any kind



Walkways can be marked by painting them or covering them with Hi-traction walkway covers. These are available for both indoor and outdoor use and are ideal for workplaces, ramps, stair landings, mezzanines, locker rooms, kitchen and gallery floors. In short: any situation where you want secure footing on a high-traffic surface. Blomsma offers various solutions in which e.g. escape routes are implemented in the walkway system. The possibilities include using single or duo tone colours, escape direction arrows or even safety symbols.

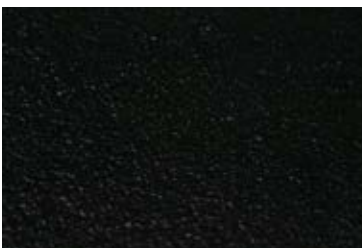
## WALKWAY COVERS

Blomsma Signs & Safety can help you make walkways as visible and anti-slip as possible, using colours, text and/or symbols to increase the visual safety. We offer a wide range of colours and materials of which you can see a small standard selection below. Blomsma offers a standard range of FRP covers\*:



### WALKWAY COVER SAFETY YELLOW

	1.000mm	2.000mm	3.000mm
750mm	1005.100127	1005.100128	1005.100129
1.000mm	1005.100130	1005.100131	1005.100132
1.500mm	1005.100133	1005.100134	1005.100135



### WALKWAY COVER BLACK

	1.000mm	2.000mm	3.000mm
750mm	1005.100136	1005.100137	1005.100138
1.000mm	1005.100139	1005.100140	1005.100141
1.500mm	1005.100142	1005.100143	1005.100144



### WALKWAY COVER SAFETY BROWN

	1.000mm	2.000mm	3.000mm
750mm	1005.100145	1005.100146	1005.100147
1.000mm	1005.100148	1005.100149	1005.100150
1.500mm	1005.100151	1005.100152	1005.100153



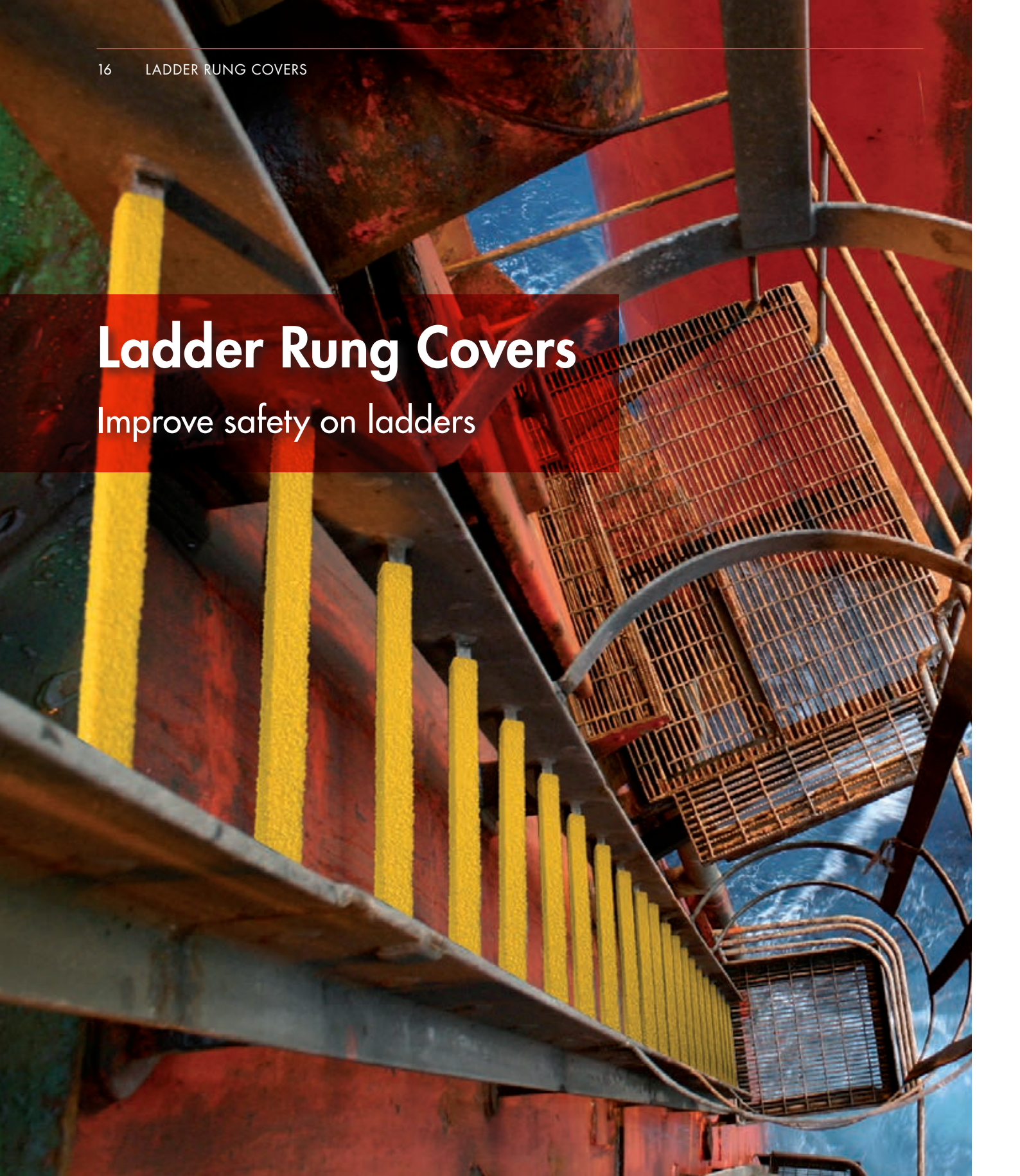
### WALKWAY COVER SAFETY GREY

	1.000mm	2.000mm	3.000mm
750mm	1005.100154	1005.100155	1005.100156
1.000mm	1005.100157	1005.100158	1005.100159
1.500mm	1005.100160	1005.100161	1005.100162

\* Stainless steel or galvanized steel covers can be manufactured on demand.

# Ladder Rung Covers

Improve safety on ladders



There is no need to climb slippery ladders anymore, because ladder rung covers provide reliable anti-slip protection that you need, right where you want it. Typical ladder rungs, especially those made from bar stock, are notorious for getting slippery. These durable covers resist corrosion and impacts, providing years of anti-slip protection in a variety of environments, from offshore drilling platforms to commercial applications. Ladder rung covers are available in round, channel or square profiles to fit over existing ladder rungs.



## LADDER RUNG COVERS

Our Ladder Rung profiles are made of high-quality fiberglass imbedded with sharp and hard-wearing silicon carbide stone fragments for a very high durability. We supply both round and square profiles designed exactly to fit existing ladder rungs. The profiles come in a range of colours, including luminescent.



### LADDER RUNG COVER CHANNEL SAFETY YELLOW

	300mm	400mm	500mm
20mm	1005.100163	1005.100164	1005.100165
25mm	1005.100166	1005.100167	1005.100168
30mm	1005.100169	1005.100170	1005.100171



### LADDER RUNG COVER CHANNEL SAFETY BLACK

	300mm	400mm	500mm
20mm	1005.100172	1005.100173	1005.100174
25mm	1005.100175	1005.100176	1005.100177
30mm	1005.100178	1005.100179	1005.100180



### LADDER RUNG COVER ROUND SAFETY YELLOW

	300mm	400mm	500mm
∅ 20mm	1005.100181	1005.100182	1005.100183
∅ 25mm	1005.100184	1005.100185	1005.100186
∅ 30mm	1005.100187	1005.100188	1005.100189



### LADDER RUNG COVER ROUND SAFETY BLACK

	300mm	400mm	500mm
∅ 20mm	1005.100190	1005.100191	1005.100192
∅ 25mm	1005.100193	1005.100194	1005.100195
∅ 30mm	1005.100196	1005.100197	1005.100198

### ADHESIVE FOR APPLYING LADDER RUNG COVERS

1201.101290



Mentioned sizes for ladder rung covers are inner dimensions.



# Anti-slip tapes and Foils

For a safer workplace

Anti-slip tapes and foils provide a durable, even non-slip surface to reduce injury in a wide range of applications. Silicon carbide grit ensures durability in both indoor and outdoor environments. The aggressive adhesive system provides superior resistance to temperature, moisture, and chemicals. Custom cutting to fit walkways, production areas, stairs, marine decks, and designated safety areas can further reduce injuries for a safer workplace.

# ANTI-SLIP TAPES AND FOILS

All of our anti-slip tapes and foils can be custom sized and cut to meet your specific requirements. Our engineers can recommend the right product to work for your specific environment and usage. Listed below is a small sample of the most frequently used products.



## SAFETY TRACK® NON-SLIP GRIT ROLL

1005.100199	50,8mm x 18,3m	2inch x 30ft
1005.100200	76,2mm x 18,3m	3inch x 30ft
1005.100201	101,6mm x 18,3m	4inch x 30ft



## SAFETY TRACK® NON-SLIP GRIT ROLL

1005.100202	50,8mm x 18,3m	2inch x 30ft
1005.100203	76,2mm x 18,3m	3inch x 30ft
1005.100204	101,6mm x 18,3m	4inch x 30ft



## SAFETY TRACK® NON-SLIP GRIT ROLL

1005.100205	50,8mm x 18,3m	2inch x 30ft
1005.100206	76,2mm x 18,3m	3inch x 30ft
1005.100207	101,6mm x 18,3m	4inch x 30ft



## SAFETY TRACK® NON-SLIP GRIT TREAD

1005.100208	152,4mm x 609,6mm	6inch x 24inch
1005.100209	139,7mm x 139,7mm	5.5inch x 5.5inch



## SAFETY TRACK® NON-SLIP GRIT ROLL

1005.100210	610mm x 18,3m	24inch x 60ft
1005.100211	914,4mm x 18,3m	36inch x 60ft
1005.100212	1219,21mm x 18,3m	48inch x 60ft



# Military Grade

Durable and extra traction

Our Military Grade anti-slip tapes and foils are engineered to perform in extreme outdoor environments that require durability and extra traction. It has been successfully tested and used for Military/Marine applications.

## MILITARY GRADE ANTI-SLIP TAPES AND FOILS

All of our Military Grade anti-slip tapes and foils can be custom sized and cut to meet your specific requirements. Our engineers can recommend the right product to work for your specific environment and usage. Listed below is a small sample of the most frequently used products.



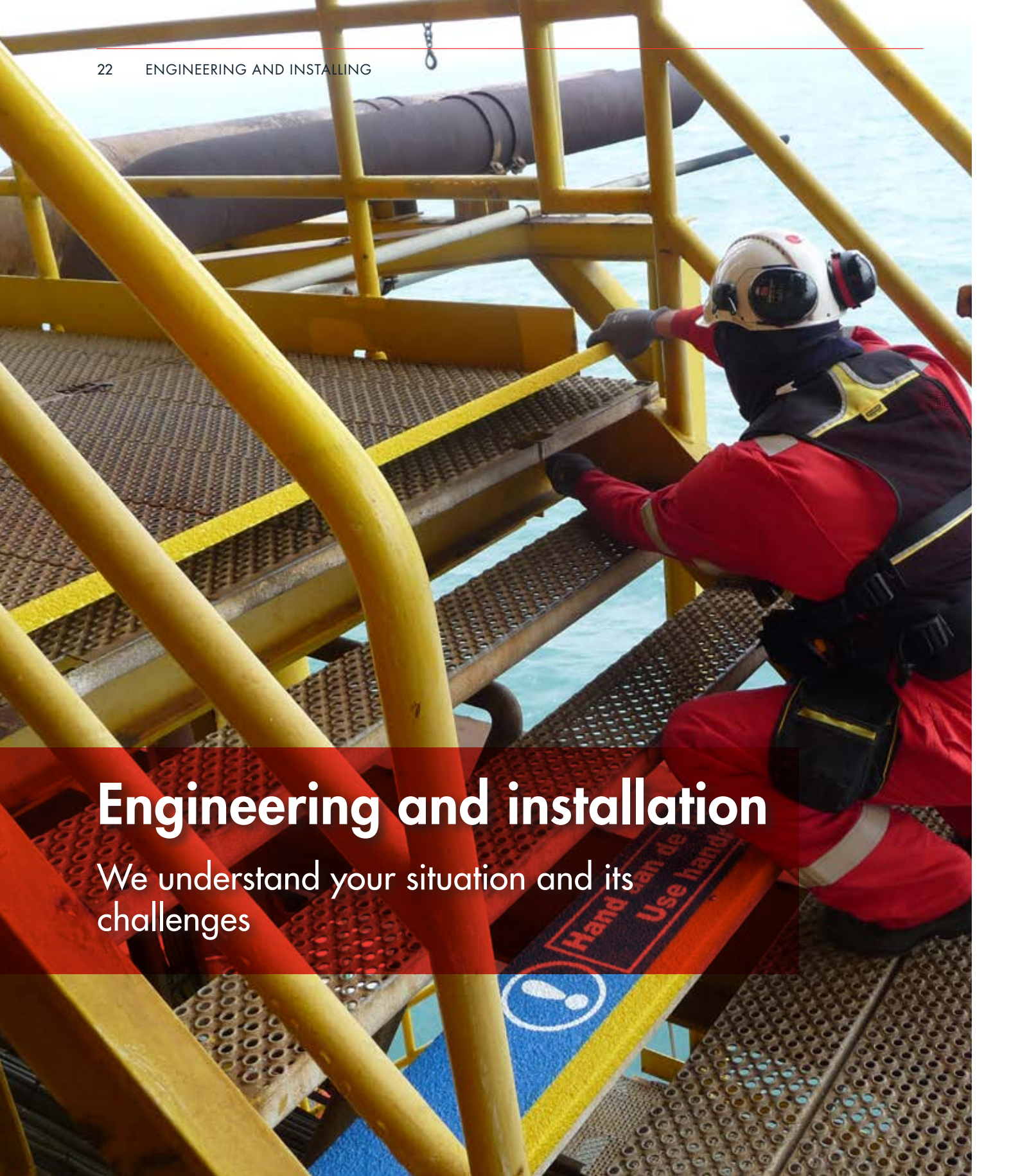
### SAFETY TRACK® NON-SLIP MILITARY SPEC ROLL

1005.100213	50,8mm x 18,3m	2inch x 30ft
1005.100214	76,2mm x 18,3m	3inch x 30ft
1005.100215	101,6mm x 18,3m	4inch x 30ft



### SAFETY TRACK® NON-SLIP MILITARY SPEC SHEET

1005.100216	50,8mm x 50,8mm	2inch x 2inch
1005.100217	76,2mm x 101,6mm	3inch x 3inch
1005.100218	101,6mm x 127mm	4inch x 4inch



## Engineering and installation

We understand your situation and its challenges

On-site survey, measuring, designing, draftworks for plans and installation are services that Blomsma Signs & Safety can offer to implement a complete system. Our engineers and mechanics are SSC\* certified and work in both onshore and offshore environments. Blomsma Signs & Safety provides a complete range of anti-slip solutions made from high-quality materials, suitable for all kinds of applications. These yield considerable economical savings and increase safety. Anti-slip surfaces ensure exceptional foothold in wet and oily conditions.

# OUR SERVICES

## TPS - Total Project Service

Our Total Project Service starts with an inventory that is conducted by specialists with a vast amount of experience in the industry. A site visit is made to determine the needs and in what form and using which materials.

The inventory results are translated into sign plans by our draftsmen. A management system that is linked directly to the site drawings gives a clear picture of the costs of manufacturing and fitting the specified items.

## Our other services include:

- Safety signage projects
- Process identification projects
- Pipe and tankmarking projects
- Safety draftworks
- Decorative and directional signage projects

## Our customers include:



**HEAD OFFICE**

**Blomsma Signs & Safety Zoetermeer**

Storkstraat 1-3  
2722 NN Zoetermeer  
The Netherlands

+31 (0)79 330 10 90  
signs.safety@blomsma.eu

**Blomsma Signs & Safety GmbH**

Bunde-West 29  
26831 Bunde  
Germany

+49 (0)170 198 1600  
signs.safety@blomsma.de



Visit our website:

**BLOMSMA-SAFETY.COM**

© COPYRIGHT BLOMSMA SIGNS & SAFETY B.V. - all rights reserved



**BLOMSMA  
SIGNS&SAFETY**