



SIGN COMPLIANCE
SIGN PROJECTS
SIGN MANAGEMENT

OFFSHORE
& MARINE



BLOMSMA
SIGNS & SAFETY

A worker wearing a white hard hat with a logo, safety glasses, and a high-visibility yellow jacket with reflective stripes is writing on a clipboard. He is standing on a platform with yellow railings. In the background, there is a complex industrial structure with pipes, ladders, and a circular sign that says 'SAFETY'. The scene is set on an offshore platform.

SIGN COMPLIANCE **SIGN PROJECTS** **SIGN MANAGEMENT**

The offshore environment is a world of extremes. Harsh weather conditions, working with chemicals, compact construction and influences of saltwater imposes many risks. These risks must be managed to increase overall Safety. Safety signage helps to identify possible risks and contributes to the safety of people. The harsh environment imposes very high demands on the safety signage. Blomsma Signs & Safety has a long tradition in the offshore and marine sector and provides signage solutions for many decades. It is a world of extremes that we know well.

E-ROOM 2



Electrical hazard



Do not
extinguish with water



Authorized personnel only.

Unauthorized presence constitutes a breach of security.

Safety signage

Increasing safety awareness using safety signage as a system

There are various aspects of safety signage in terms of purpose, use, types and necessity. And each sector has its own typical demands to safety signage. However, many aspects have overlapping starting points and similar philosophies. These are determined in law and legislation and best practices. Safety signage is vital in the workplace to ensure the safety of our workers, installation and environment. One of the most effective ways to communicate is through images. International legislations provide a range of standardized safety symbols or a guideline to create safety symbols, ensuring a clear interpretation of the opposed message in a uniform style.

Phosphorescent signs

Emitting light in case of sudden light failure or black-out



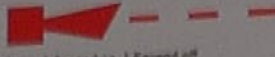
Signage is only effective if it is visible. Through the use of different signs, this effect can be enhanced. But the type of signage plays an even bigger role. Indoors, it is preferable to use phosphorescent (afterglow) materials. In emergency situations where there is a sudden light failure or black-out, the phosphorescent signs emit light for periods of time. Phosphorescent material has the ability to hold energy, this is visible during light outages. Without an external power source, this is an ultimate solution to implement an adequate signage system.

ESCAPE PLAN

General Platform Alarm (GPA)



Flashing light in noisy area



Tone: 1 Second on, 1 Second off



Proceed to your designated Muster Point on hearing GPA

Prepare to Abandon Platform Alarm (PAPA)



Flashing light in noisy area

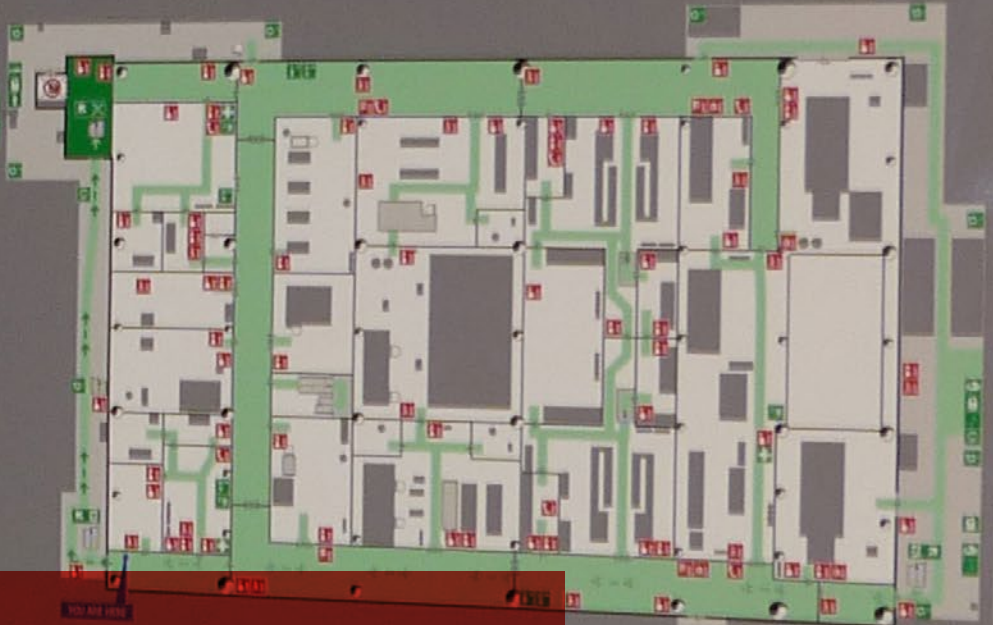


Continuous tone



Proceed to your Freefall Lifeboat station unless directed otherwise by the OIM

- Primary Escape Route**
- Secondary Escape Route**
- Fire equipment**
 - Manual call station
 - Fire hose reel
 - Fire extinguisher
 - Wettable fire extinguisher
 - Emergency telephone
 - Fire blanket
 - Do not use electrical in case of fire
- Rescue equipment**
 - First aid kit
 - Emergency shelter
 - Eye wash station
 - Escape mask
 - Rescue hoist
 - Liberal
 - Lifeline with light
 - Lifeline with light and camera
 - Alcohol
 - Watermark suit
 - Resuscitating device



Orientation beforehand

Escape Plans not only for emergency situations

In case of fire Keep calm	In case of accidents Keep calm	In case of emergency Keep calm
1. Report fire Press Alarm 111 Press Alarm 112 Press Alarm 113 Press Alarm 114 Press Alarm 115 Press Alarm 116 Press Alarm 117 Press Alarm 118 Press Alarm 119 Press Alarm 120 Press Alarm 121 Press Alarm 122 Press Alarm 123 Press Alarm 124 Press Alarm 125 Press Alarm 126 Press Alarm 127 Press Alarm 128 Press Alarm 129 Press Alarm 130	1. Report accidents Press Alarm 111 Press Alarm 112 Press Alarm 113 Press Alarm 114 Press Alarm 115 Press Alarm 116 Press Alarm 117 Press Alarm 118 Press Alarm 119 Press Alarm 120 Press Alarm 121 Press Alarm 122 Press Alarm 123 Press Alarm 124 Press Alarm 125 Press Alarm 126 Press Alarm 127 Press Alarm 128 Press Alarm 129 Press Alarm 130	1. Report emergency Press Alarm 111 Press Alarm 112 Press Alarm 113 Press Alarm 114 Press Alarm 115 Press Alarm 116 Press Alarm 117 Press Alarm 118 Press Alarm 119 Press Alarm 120 Press Alarm 121 Press Alarm 122 Press Alarm 123 Press Alarm 124 Press Alarm 125 Press Alarm 126 Press Alarm 127 Press Alarm 128 Press Alarm 129 Press Alarm 130
2. Bring in safety Bring injured person into safety First aid	2. First aid Press the area of accident	2. First aid Press the area of accident
3. Bring in safety Bring injured person into safety First aid	3. Further assistance See emergency plan	3. Bring in safety Bring injured person into safety First aid

Regardless of a person's location on a ship or offshore installation, rapid evacuation must always be possible. Unambiguous communication in the escape route marking under every circumstance is extremely important. It must always be possible to find and recognize the various applicable escape routes at a glance. In addition to an escape route marking system, comprehensive escape plan signboards help to orientate in controlled and uncontrolled situations.



Low Location Lighting

Light the way to safety

In the offshore and maritime sector, escape route guidance systems (low location lighting) are implemented to improve the visibility of escape routes within a vessel or installation. In a fire, the smoke that develops rises because of the heat. Escape route marking placed higher up will be rendered invisible by the smoke. The ideal escape route guidance system is therefore applied close to the floor. There are various rules and standards for escape route guidance systems. Proper interpretation and correct use of these guidelines ensure that the escape routes can be clearly seen, even during evacuation in the dark.

Durable marking for your pipes

Information carriers that last for years,
on top of the legal requirements

Marking pipes carrying hazardous substances is prescribed by legislation and regulations. The primary purpose, though, is to raise the level of safety by providing correct and up-to-date information. Markings also help to operate efficiently, by depicting information that helps operators and maintenance staff to recognize systems more quickly and prevent mistakes. Blomsma Signs & Safety handles complete pipeline marking projects in which you can rely on the durability of the markings applied. Our PolyEsPro® pipeline marking is produced in line with the 3M™ requirements and applied by our 3M™ Certified Sign Installers.



Anti-slip solutions

Reducing the risks of slips and falls

It is a fact: slips and falls account for 35% of all working days lost due to injuries. And what is more troubling is that accidental falls are one of the most commonest causes of death at the workplace. Along with painting and grinding solutions, anti-slip covers are a proven concept. They are designed with a long-lasting grit surface that provides a non-corrosive and impact resistant covering layer. They are field-proven in extremely wet, icy, oily, corrosive and dusty conditions and can be used for a wide range of solutions, such as step covers, walkway covers, drill floor covers, etc.

Platform Identification Signs

Visible from afar

A large, bright yellow identification sign with the text "N05-A" in bold black letters, mounted on an industrial structure. The sign is rectangular and appears to be made of a reflective material. It is positioned in the foreground, with a complex industrial background featuring orange railings, metal beams, and various mechanical components. The lighting is bright, highlighting the sign's high reflectance.

Platform Identification Signs (or Platform ID Signs) are designations that represent the name of an offshore platform, installation, artificial island or mobile offshore drilling rig. The platform identification signs ensure that the name of the platform or installation can be seen from the sea and from the air. These identification signs need to be visible from all approach angles, light situations and weather conditions. For the harsh conditions offshore, we supply high-quality panels and foils with high reflectance class and durable finishing methods.



Stand for quality and safety

We understand your situation
and its challenges

We see safety signage as a fundamental part of safety. It is something that people should be able to rely on. Signage must be properly implemented, not only in terms of proper materials but also the way of installation. Our trained and certified teams understand that they are one aspect of safety on site for you, and the role that they have in that regard. By understanding your situation, we can provide the best possible solutions.

OUR SERVICES

TPS - Total Project Service

Our Total Project Service starts with an inventory that is conducted by specialists with a vast amount of experience in the industry. A site visit is made to determine what signage is needed and in what form and using which materials. The inventory results are translated into sign plans by our draftsmen. A management system that is linked directly to the sign drawings gives a clear picture of the costs of making and fitting the specified signage. Bundling all the plans together creates a sign manual that is the foundation for discussions with all parties involved, the definitive implementation and ultimately even a maintenance plan. The TPS method lets Blomsma Signs & Safety guarantee that you will comply with current legislation and regulations at the moment the project is delivered.

SPS - Signage Pit-Stop Service

A quick service for updating the safety signage system for ships and offshore rigs, based on provided safety plans. Blomsma provides the standard safety signs and/or pipe marking and installation on site.

Signpackages and Signmanuals

Blomsma offers the possibility to order signpackages, optionally with a desktop engineered signplan for global deliveries. Based on a provided Safety Plan a signplan is drafted accompanied with installation instructions.

Low Location Lighting surveys

Blomsma Signs & Safety provides Low Location Lighting surveys according to SOLAS, IMO Resolution A752(18), ISO-15370 or specific (Navy)standards. Our surveyors execute a performance measurement of the phosphorescent material and inspect if the low location lighting system is complete. Blomsma Signs & Safety is a DNV certified service supplier (Certificate AOSS00000MM).

3M™ Platinum Graphic Select Provider™

Blomsma is a 3M™ Platinum Graphic Select Provider™. That is the highest achievable level for suppliers in the signage market. This means that Blomsma Signs & Safety is allowed to provide guarantees independently on behalf of 3M™. These guarantees are given for the materials, the production and the assembly/mounting. What this means for you is the optimum project guarantee and complete certainty.

Our customers include:



HEAD OFFICE

Blomsma Signs & Safety Zoetermeer

Storkstraat 1-3
2722 NN Zoetermeer
The Netherlands

+31 (0)79 330 10 90
contact@blomsma-safety.com

Blomsma Signs & Safety GmbH

Bunde-West 29
26831 Bunde
Germany

+49 (0)170 198 1600
kontakt@blomsma-safety.de



PolyesPro[®]



Visit our website:

BLOMSMA-SAFETY.COM

© COPYRIGHT BLOMSMA SIGNS & SAFETY B.V. - all rights reserved



**BLOMSMA
SIGNS&SAFETY**